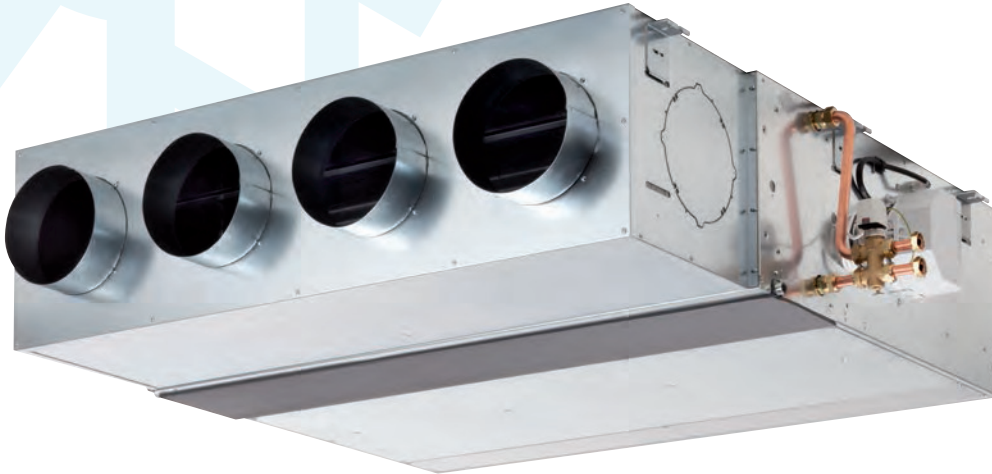


# YEFB Hydro Blower

2 & 4 pipe system

A complete range from 2.8 kW up to 31.5 kW



**CSR00 (Wall mounted)**  
Fan speed selector



**CMR00 (Wall mounted)**  
Thermostat with manual fan speed and S/W change over



**CER00 (Wall mounted)**  
Thermostat with manual fan speed and automatic change over

**CER20 (Wall mounted)**  
Thermostat with auto. fan speed and automatic change over

**CER30 (Wall mounted)**  
Thermostat with auto. fan speed and automatic change over for modulating valve



**TUC03 Terminal unit controller**  
BacNET and N2 Metasys network compatible

YEFB Blower units are available in 6 sizes for horizontal concealed installations: thanks to their high ESP fans that can handle up to 250Pa, they are the ideal solution for air conditioning large spaces.



Selection software

## Features

- 6 unit sizes for horizontal mounting
- Handles high external static pressure up to 250Pa
- Choice of 2 or 4 pipe systems
- Twin centrifugal fans
- Horizontal air return
- Air distribution plenum
- Electric heater option
- Optional paint finish
- F5 grade filter option
- 5 Row cooling coil option on sizes 060, 070

# YEFB Hydro Blower

2.8 to 31.5 kW



## Unit performance at 50 Pa external static pressure, with 4 row cooling coil

Model YEFB		020-4	030-4	040-4	050-4	060-4	070-4		
Total cooling capacity [kW]	(1)	max	7.14	10.12	12.84	15.02	19.92	24.31	
		med	5.40	8.29	10.82	13.04	16.31	19.72	
		min	3.33	7.00	8.98	11.66	13.53	18.11	
Sensible cooling capacity [kW]	(1)	max	5.90	8.62	11.31	13.51	17.17	22.14	
		med	4.23	6.53	8.94	11.42	13.67	19.05	
		min	2.42	5.27	7.03	7.90	11.08	17.11	
Water flow in cooling [l/h]	(1)	max	1 225	1 736	2 204	2 577	3 418	4 171	
		med	927	1 422	1 856	2 238	2 799	3 384	
		min	571	1 201	1 541	2 000	2 321	3 107	
Pressure drop in cooling [kPa]	(1)	max	27.9	35.0	38.3	52.4	19.1	27.6	
		med	17.7	24.0	27.9	39.9	13.2	23.4	
		min	8.1	17.6	19.6	32.1	9.4	20.1	
Heating capacity 2 pipes [kW]	(2)	max	9.93	14.24	18.43	21.47	28.24	36.11	
		med	7.40	11.11	15.55	18.51	23.55	33.19	
		min	4.01	9.13	12.03	16.24	19.36	31.31	
Water flow in heating 2 pipes [l/h]	(2)	max	Water flow values as Cooling, accordingly to the EUROVENT standards and UNI ENV 1397						
		med							
		min							
Pressure drop in heating 2 pipes [kPa]	(2)	max	15.5	31.1	34.7	47.6	17.0	28.2	
		med	8.8	21.5	25.2	36.3	11.6	25.1	
		min	2.0	15.6	17.9	29.7	8.3	21.1	
Heating capacity 2 pipes [kW]	(3)	max	16.78	24.42	31.16	36.33	48.45	62.46	
		med	12.49	18.93	26.2	31.24	39.13	56.49	
		min	6.75	15.47	20.23	27.39	32.07	53.22	
Water flow in heating 2 pipes [l/h]	(3)	max	1 349	2 145	2 467	2 927	3 917	5 392	
		med	1 102	1 662	2 059	2 511	3 222	5 092	
		min	591	1 359	1 695	2 216	2 638	4 618	
Pressure drop in heating 2 pipes [kPa]	(3)	max	17.8	37.1	38.9	55	19.4	34.1	
		med	9.9	24.8	27.6	41	13.7	30.3	
		min	2.3	17.5	19.2	32.7	9.6	25.3	
Air flow [m <sup>3</sup> /h]		max	1 387	2 160	2 760	3 513	4 118	5 541	
		med	928	1 450	2 076	2 746	3 176	4 928	
		min	491	1 115	1 545	2 320	2 548	4 340	
Sound power level [dB(A)]		max	63.8	65.4	70.1	70.4	76.6	78.4	
		med	53.5	59.7	63.0	67.1	69.3	75.6	
		min	47.2	54.9	56.4	63.2	64.2	72.9	
Sound pressure level [dB(A)]	(4)	max	53.2	54.8	59.5	61.9	66.0	69.1	
		med	42.9	49.1	52.4	56.4	58.8	66.4	
		min	33.1	44.3	45.8	52.6	53.6	63.8	
Power supply [V-ph-Hz]		230 / 1 / 50							
Power input [W]	max	187	392	508	703	1 056	1 794		
Absorbed current [A]	max	0.82	1.90	2.24	3.08	4.85	8.05		
Dimensions	Height	mm	407.6	407.6	407.6	407.6	517.6	517.6	
	Width	mm	902	902	902	902	1 160	1 160	
	Depth	mm	989.6	989.6	1 239.6	1 239.6	1 634.6	1 634.6	

(1) Room temperature 27°C d.b., 19°C w.b. - Water temperature 7/12 °C

(2) Room temperature 20°C - Water inlet temperature: 50°C

(3) Room temperature 20°C - Water inlet temperature: 70/60°C

(4) Sound pressure level in a 100 m<sup>3</sup> room, at 1 m distance and reverberating time of 0.3 s.

4 pipe system not available with 4R coil

4 pipe system not available with 4R heating coil



Manufacturer reserves the rights to change specifications without prior notice.