

# SOLID PAINT-AMBIENT SURFACE MARKERS

## B-E® PAINTSTIK®

### For Marking Very Rough Surfaces

- For marking forgings, castings, rough logs, lumber, concrete and other rough surfaces
- Marks will withstand prolonged immersion in water
- Lead-free, non-toxic
- Long-lasting, weather-resistant, fade-resistant
- Uses #101 & #102 holder (p. 32)
- Marking range: -50°F to 150°F (-46°C to 66°C)



PART NO.	COLOR	CASE QTY.
Size: 1 1/16" x 4-3/4"		
80620	White	144
80621	Yellow	144
80622	Red	144
80623	Black	144
80624	Orange	144
80625	Blue	144

## B-L® PAINTSTIK®

### Bleeds Through Solvent-Based Paints

- Marks bleed through solvent-based or oil-based paints
- For fabricating structural steel or layout work where the marks are required to bleed through a primer coat covering the marks
- To prevent bleeding through the finish coat, seal the marked areas with water-based epoxy paint
- For marking under water-based primers use the BL-W Paintstik®
- Uses #101 & #102 holder (p. 32)
- Marking range: -50°F to 150°F (-46°C to 66°C)



PART NO.	COLOR	CASE QTY.
Size: 1 1/16" x 4-3/4"		
80725	Blue	144
84834	Blue	48

## BL-W® PAINTSTIK®

### Bleeds Through Water-Based Paints

- Marks bleed through water-based paints
- For fabricating structural steel or layout work where the marks are required to be seen through the primer coat covering the marks
- For marking under solvent-based or oil-based primers use the B-L Paintstik®
- Uses #101 & #102 holder (p. 32)
- Marking range: -50°F to 150°F (-46°C to 66°C)



PART NO.	COLOR	CASE QTY.
Size: 1 1/16" x 4-3/4"		
80735	Blue	144

## C® PAINTSTIK®

### For Marking on Smooth Surfaces

- For marking on smooth surfaces such as: cold rolled steel, sheet metal, plate glass and plastic
- Long-lasting, weather-resistant, fade-resistant
- Uses #101 & #102 holder (p. 32)
- Marking range: 0°F to 150°F (-18°C to 66°C)



PART NO.	COLOR	CASE QTY.
Size: 1 1/16" x 4-3/4"		
80820	White	144
80821	Yellow	144
80823	Black	144

## E® PAINTSTIK®

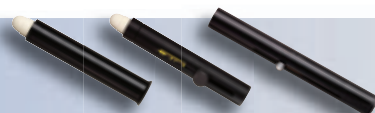
### For High-Visibility Marks

- High-intensity colors
- For greater visibility in dimly lit areas
- For coding, identification, layout and assembly work
- Long-lasting, weather-resistant, fade-resistant
- Available in regular and king size
- Uses #101 & #102 holder (p. 32)
- Marking range: -50°F to 150°F (-46°C to 66°C)



PART NO.	COLOR	CASE QTY.
Standard Size: 1 1/16" x 4-3/4"		
88620	White	144
88621	Yellow	144
88622	Red	144
88624	Orange	144
88625	Blue	144
King Size: 1" x 4-3/4"		
88640	White	144

## PAINTSTIK® HOLDERS



Clean, comfortable, convenient.  
Complete selection on pp. 32-33