

SPECIALTY MARKERS

SILVER-STREAK® METAL MARKER

For Metal Layout and Fabrication



- Available in flat and round sizes
- Marks on all types of metal surfaces
- Ideal for metal layout and fabrication work
- Marks won't rub off like soapstone
- Marks are resistant to torch flames
- Durable metal and plastic holders prevent breakage
- Holders include pocket clip
- Round holder features a built-in sharpener
- Available only as carded product



PART NO.	SHAPE	CASE QTY.
96004	Flat	24
96006	Round	24
Refills		
96018	Flat, 25 Pack	24
96002	Flat, 100 Pack	24
96007	Round, 6 Pack	24
Holders		
96017	Flat, 10 Pack	12

RED-RITER® METAL MARKER

Fineline Marking for All Metal Surfaces



- Ideal for metal layout and fabrication work
- Marks won't rub off like soapstone
- Marks are resistant to torch flames
- High visibility on aluminum and stainless steel
- More visible through filter plates
- No sharpening necessary
- Includes handy pocket clip holder
- Available only as carded product



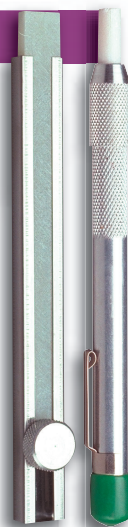
PART NO.	SHAPE	CASE QTY.
96005	Flat	24
Refills		
96019	25 Pack	24
Holders		
96017	Flat, 10 Pack	12

SOAPSTONE

Temporary Marking for Metal Surface Welding



- Made of all-natural soapstone for superior marking
- Marks will not contaminate welds and are easily removed
- Available in flat, round and square shapes; holders available for the flat and round sizes
- *Uses Soapstone Holders:
 - All-metal construction for long worklife
 - Prevents breakage
 - Allows full use of each soapstone marker
 - Handy pocket clip
 - Length Flat 5-3/4"
 - Length Round 5-1/4"



PART NO.	SIZE	CASE QTY.
80129	5" x 1/2" x 3/16" flat	432
80130	5" x 1/4" round	432
80131	5" x 1/4" x 1/4" square	432
Holders		
80140	For flat soapstone	12
80141	For round soapstone	12

*Holders sold separately