

Utopia Prime ceiling unit

A R410 or R32 solution to meet the toughest technical restrictions



Compactness

Outdoor units are exceptionally compact, with a footprint of 0.23m².

Easy to install

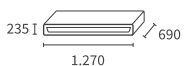
We have a number of solutions to help your installation:

- Choice of supply voltage
- Extensive range of functions
- Extra long pipes
- Start/Stop contacts and fault reports
- Compatible with all System Free control systems

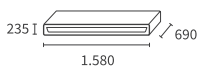
Energy-saving

The motion sensor (optional) automatically optimizes the level of comfort while limiting the energy consumption in rooms only occupied occasionally. It continuously analyzes thermal disparities as well as the presence of people in the room, adjusting its setting temperature (down to 2°C), fan speed, and airflow direction to suit.

Indoor units

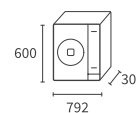


RPC-3.0FSR

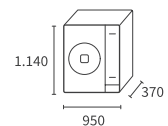


RPC-4.0FSR
RPC-5.0FSR
RPC-6.0FSR

Outdoor units



RAS-3HVR2



RAS-4H(V)RC2E
RAS-5H(V)RC2E
RAS-6H(V)RC2E
RAS-4H(V)NC2E
RAS-5H(V)NC2E
RAS-6H(V)NC2E

Utopia Prime ceiling unit

Provisional data









		R32 fluid				R410A fluid		
		7.1kW	10KW	12.5KW	14KW	10KW	12.5KW	14KW
Performance, cooling		3 Hp	4 Hp	5 Hp	6 Hp	4 Hp	5 Hp	6 Hp
Rated power, cooling (min-max)	kW	7.10	10.00	12.50	14.00	10.00	12.50	14.00
Rated power input cooling	kW	2.29	3.25	4.60	5.49	3.25	4.60	5.49
EER	-	3.10	3.08	2.72	2.55	3.08	2.72	2.55
Seasonal energy class Cooling	-	A				A		
SEER (average climate)	-	5.29	5.02(V) - 4.93	5.74(V) - 5.71	5.56(V) - 5.53	5.02(V) - 4.93	5.74(V) - 5.71	5.56(V) - 5.53
Guaranteed performance Cooling for outdoor Temp ⁽³⁾	°C	-15°C / +46°C (DB)				-15°C / +46°C (DB)		
Performance, heating								
Rated power, heating (min-max)	kW	8.00	11.20	14.00	16.00	11.20	14.00	16.00
Power at -7°C*	kW	6.30	10.10	10.50	12.00	10.10	10.50	12.00
Rated power input heating	kW	2.33	2.91	3.94	4.40	2.91	3.94	4.40
COP	-	3.43	3.85	3.55	3.64	3.85	3.55	3.64
Seasonal energy class Heating	-	A+	A	-	-	A	-	-
SCOP (average climate)	-	4.13	3.90	4.00	4.05	3.90	4.00	4.05
Guaranteed performance in Heating mode for outside Temp*	°C	-20°C / +18°C (WB)				-20°C / +18°C (WB)		
Indoor units		RPC-3.0FSR	RPC-4.0FSR	RPC-5.0FSR	RPC-6.0FSR	RPC-4.0FSR	RPC-5.0FSR	RPC-6.0FSR
Sound pressure in Cooling mode (pressure) (pv / mv / gv1 / gv2) ⁽²⁾	dB(A)	29 / 33 / 37 / 40	32 / 37 / 42 / 44	35 / 41 / 45 / 48	36 / 42 / 47 / 49	32 / 37 / 42 / 44	35 / 41 / 45 / 48	36 / 42 / 47 / 49
Sound pressure	dB(A)	56	60	64	65	60	64	65
Airflow in Cooling mode (pv / mv / gv1 / gv2)	m³/h	750 / 930 / 1110 / 1260	1020 / 1320 / 1590 / 1800	1200 / 1530 / 1860 / 2100	1260 / 1620 / 1950 / 2220	1020 / 1320 / 1590 / 1800	1200 / 1530 / 1860 / 2100	1260 / 1620 / 1950 / 2220
Condensate pump included	-	no				no		
Max. elevation	mm	600				600		
Dimensions (H x L x D)	mm	235 x 1270 x 690		235 x 1580 x 690		235 x 1580 x 690		
Weight	kg	35		41		41		
Cooling pipe diameter (Liq / Gas)	inches	3/8 - 5/8				3/8 - 5/9		
Condensate outlet diameter (ext)	mm	25				25		
Power supply	-	1~ 230V 50Hz				1~ 230V 50Hz		
Max. current	A	5				5		
Cable width (EN 60 335-1) ⁽¹⁾	mm²	3 x 0.75				4 x 0.75		
Remote control	-	PC-ARFP1E				PC-ARFP1E		
Outdoor units		RAS-3HVRC2	RAS-4H(V)RC2E	RAS-5H(V)RC2E	RAS-6H(V)RC2E	RAS-4H(V)NC2E	RAS-5H(V)NC2E	RAS-6H(V)NC2E
Sound pressure in Cooling mode (Night mode) ⁽²⁾	dB(A)	48 (46)	52 (50)	53 (50)	55 (53)	52 (50)	54 (53)	55 (53)
Sound pressure	dB(A)	66	68	69	71	68	69	71
Airflow (Cooling / Heating)	m³/h	2982	4800		4800			
Dimensions (H x L x D)	mm	629 x 898 x 300		1140 x 950 x 370		1140 x 950 x 370		
Net weight	kg	48		84		86 (84)		
Compressor	-	Inverter DC rotary unit				Inverter DC rotary unit		
Cooling properties								
Diameter of pipes (Liq / Gas)	mm (inches)	9.52 (3/8) - 15.88 (5/8)				9.52 (3/8) - 15.88 (5/8)		
Initial coolant fill	kg	1.7		3.0		3.2		
Prefilled for	m	20				20		
Max. length	m	5				5		
Max. length / Coolant refill	m/g/m	50 / 45		75 / 45		75 / 60		
Max. level difference (outdoor unit above / outdoor unit below)	m	30 / 20				30 / 20		
Coolant	-	R32				R410A		
Electrical features, outdoor unit								
Power supply	-	1~ 230V 50Hz	1~ 230V 50Hz or 3N~ 400V 50Hz	2~ 230V 50Hz or 3N~ 400V 50Hz	3~ 230V 50Hz or 3N~ 400V 50Hz	1~ 230V 50Hz or 3N~ 400V 50Hz		
Max. current	A	15.8	22.5		22.5			
Cable width (EN 60 335-1) ⁽¹⁾	mm²	2 x 0.75	3 x 6.00 or 5 x 4.00		3 x 6.00 or 5 x 4.00			
Indoor/outdoor connection (protected)	mm²	2 x 0.75 (2)				2 x 0.75 (2)		

⁽¹⁾ Data is for guidance purposes only. It is the installer's responsibility to ensure that these cable widths meet the needs of the facility and current standards.
⁽²⁾ Sound levels (pressure) are measured in an anechoic chamber at 1.50 m below the unit (no ceiling under the unit), with an extraction duct at 1 m and a discharge duct at 2 m.
⁽³⁾ To ensure a cooling mode at -15°C, this option must be activated. (V) Single-phase version.
 * Data includes defrosting. To find out the data for your project, refer to our technical catalogs. ** Performance values are stated for RCI-FSR cassette units in accordance with Eurovent benchmarks.

Retail price per unit excluding taxes		(+eco part)	RPC-3.0FSR	RPC-4.0FSR	RPC-5.0FSR	RPC-6.0FSR	RPC-4.0FSR	RPC-5.0FSR	RPC-6.0FSR
Indoor unit	-	-	€2,215	€2,460	€2,810	€3,190	€2,460	€2,810	€3,190
External unit	Single-phase	€+1.67	RAS-3HVRC2	RAS-4HVRC2E	RAS-5HVRC2E	RAS-6HVRC2E	RAS-4HVNC2E	RAS-5HVNC2E	RAS-6HVNC2E
	Three-phase		-	€3,750	€4,200	€4,555	€3,750	€4,200	€4,555
			€3,880	€4,300	€4,875	€3,880	€4,300	€4,875	
Wired remote control PC-ARFP1E		-	€230				€230		
Price for whole set	Single-phase	-	€4,945	€6,440	€7,240	€7,975	€6,440	€7,240	€7,975
Indoor unit + remote control + outdoor unit	Three-phase	-	€6,570	€7,340	€8,295	€8,295	€6,570	€7,340	€8,295

Eco-participation is a net unit amount excluding taxes and is not discountable. It is added to the net price. The bundle includes: ceiling unit, wired remote control PC-ARFP1E, outdoor unit.

controls and compatible accessories (see the tab VRF TWIN controls)

- 
Simple wired controller
 PC-ARH1E
 Price plus taxes: €180
- 
Infrared controller
 PC-AWR
 Price plus taxes: €210
- 
Intuitive multifunction cable control
 PC-ARFP1E
 Price plus taxes: €230
- 
Remote sensor
 THM-R2AE
 Price plus taxes: €60
- 
Infrared receiver
 PC-ALHC1 (integrated)
 Price plus taxes: €270
 PC-ALHZ1 (external)
 Price plus taxes: €330
- 
Condensation drainage kit
 DDB-26 (4Hp models)
 DDB-12L (3Hp models)
 Price plus taxes: €25
- 
Motion sensor
 SOR-NEP
 Price plus taxes: €420
- 
Connectors
 PCC-1A
 Price plus taxes: €65